



# **Upper Teesdale Agricultural Support Services Limited**

**Annual Report 2013**

## **Contents:**

<b>Patrons, Honorary Officers and Management Committee Trustees</b>	<b>page 2</b>
<b>Project Staff</b>	<b>page 3</b>
<b>Chairperson's Report</b>	<b>page 4</b>
<b>Project Manager's Report</b>	<b>page 6</b>
<b>Work with Young People</b>	<b>page 16</b>
<b>Outreach Facilities and Services</b>	<b>page 21</b>
<b>Funders, Assisters and Advisers</b>	<b>page 22</b>
<b>Contact Details, Aims and Mission Statement</b>	<b>page 23</b>
<b>APPENDIX 1 - Mart/Middleton Hub</b>	<b>page 24</b>
<b>APPENDIX 2 - Training Courses</b>	<b>page 26</b>
<b>APPENDIX 3 - Financial Information &amp; Accounts</b>	<b>page 28</b>

# **Patrons, Honorary Officers & Management**

## **Committee Trustees:**

### **Patrons:**

The Lord Barnard, T.D.

The Reverend Rachel Benson DL

Dr Patrick Lavery

Sir Paul Nicholson

Lady Nicholson

The Earl of Strathmore and Kinghorne

The Rt Revd Justin Welby - Bishop of Durham then Archbishop of Canterbury  
(Retired November 2013)

### **Management Committee Trustees:**

Gary Bevan

Louise Dalton (Honorary Secretary)

Bob Danby (Honorary Treasurer)

Grace Hall (Retired December 2013)

Kay Hutchinson

Dr Jonathan Nainby-Luxmoore (Honorary Chairperson)

Richard Matthews

Alan Scott (Honorary Vice Chairperson)

Carl Stephenson (Co-opted in September 2013)

Jon Stoddart

Ian Tallentire

Sally Ann Teward

### **UTASS Core & Project Staff:**

<b>Ann Bell</b>	Office Systems, Monitoring & Administration Support Worker
<b>Hayley Bell</b>	Middleton Hub Development Worker (from October 2013)
<b>Richard Betton</b>	Local Farmers' Liaison Worker
<b>Theo Clapp</b>	Youth Worker (from September 2013)
<b>Lucy Jenkins</b>	Project Officer (Funding)
<b>Gordon A. Jones</b>	Administration & Support Worker (Children & Young People)
<b>Gina Richardson</b>	Sessional Youth Worker (from August 2013)
<b>Anne Scott</b>	Administration & Support Worker (Finance)
<b>Jennifer Smurthwaite</b>	Domestic Support Worker (and Sessional Children & Young People's Support Worker until October 2013)
<b>Diane Spark</b>	Project Manager (Company Secretary)
<b>Emma Spry</b>	Administration Support Worker (Social Media) (from September 2013)
<b>Julia Stephenson</b>	Training Co-ordinator & Administration Support Worker
<b>Katie Tarn</b>	Administration Support Worker (July & August)
<b>Tessa Wigham</b>	Agricultural Secretary

### **Other Associated Staff:**

<b>Jennifer Smurthwaite</b>	Youth Worker employed by Durham County Council Positive Activities for Young People
<b>Tracey Wills</b>	Advice Worker employed by Barnard Castle Citizens Advice Bureau (CAB) funded by UTASS



## Chairperson's Report:

2013 was another extremely busy and rewarding year for UTASS as we exceeded all of our target outputs.

We were all delighted to be successful in securing a 5 year 'Big Lottery' grant which will cover almost 60% of our core operational costs up until May 2018. This is a significant portion and an enormous help. However we still have 40% of our core costs to find each year, along with funding for project work, including training and provision of services for young people.

The Friends of UTASS scheme continued to expand raising an amazing £5,035. Donations were also made to our Local Giving page and the UTASS Endowment while sponsorships continued from GSC Grays for the UTASS office window and from George F White for UTASS briefings.

The heavy snowfalls in March and April resulted in many of our farmers having to concentrate their efforts on trying to keep what was left of their stock alive. UTASS worked with County Durham Community Foundation and other private donors to establish and administer the Helping Hands scheme. This scheme provided support to 37 Farmers with the completion of everyday tasks, such as walling, that weather conditions had prevented them from doing themselves. Fortunately the snow was followed by some of the best summer weather we've had in many years and this helped lift spirits and boost crops.

Our work as part of the Rural Growth Network (RGN) Programme with Middleton - in - Teesdale Farmers Auction Mart and Durham Dales Enterprise Community Interest Company has continued. We now have a full time worker in post until 31.03.15 with a remit to develop local business and enterprise opportunities. The 4 business units on the Mart site now have planning permission and the start of building work is imminent.

We, along with representatives of 16 other local groups, visited the Middleton - in - Teesdale Field Studies Centre in October. Those present unanimously felt we should continue to explore the feasibility of utilising the centre as it could prove to be a fantastic community asset from which we could all operate and flourish.

In September the UTASS Trustees were delighted to welcome Carl Stephenson to the Board. In December we were all very sorry to lose Grace Hall's expertise, as she stood down as a UTASS Trustee after 21 years. Grace was one of the key founders of UTASS and as Chairperson, for ten years, led our organisation through some incredible highs and lows.

On behalf of everyone involved at UTASS I thank Grace from the bottom of my heart for being such a generous soul who dedicated enormous amounts of her time to helping others.



*Grace Hall, Jonathan Nainby-Luxmoore & Diane Spark*

The 2013 Annual Service Users Survey responses have again been excellent with incredibly high numbers stating how UTASS helps them cope and reduces some of their stress. This is particularly reassuring as it was the core reason for the original establishment of UTASS. It is most heart-warming to hear how much UTASS is appreciated and valued by the communities it serves. Page 15 offers details of some of the comments made by service users.

2014 brings impending uncertainties surrounding Common Agricultural Policy (CAP) Reform and the consequent changes - we will continue our efforts to ensure our members have the information, advice and support necessary to run their businesses in an efficient and compliant manner through these changes. We continue into 2014 with a positive but flexible approach and, as always, a willingness to provide help wherever and whenever it is needed. Enormous thanks to all those, especially funders, who help make it all possible.

Finally, as said by many on previous occasions, it is a privilege to be part of such a worthwhile charity. My and all our wholehearted thanks must again go to our fantastic team of Patrons, Trustees, Staff and Volunteers. They are UTASS. It is their selfless dedication, caring, devoted and generous spirit that make UTASS unique and thus so difficult to replicate elsewhere. I am enormously grateful to one and all who give up some of their precious time to help others through UTASS. Thank You. But as always I remind you that New Volunteers are always welcome.

**Dr Jonathan Nainby-Luxmoore**

**UTASS Chairperson**

## Project Manager's Report:

*On behalf of our dedicated, caring and hardworking Staff, Trustees, Volunteers and Patrons I am again delighted to report on the work we have been involved in for public benefit throughout 2013, which included:*

- Practical support with the completion and submission of complex forms and paperwork, including awareness raising.
- Production and dissemination of regular briefings consisting of essential information distilled and de-jargonised from Defra, EU etc. and predominantly pertinent to the running of livestock based farm businesses.
- In cases of severe hardship, acting as third party referrers to organisations which included ARC Addington Trust and RABI.
- Support and training in setting up of sustainable methods of dealing with on-farm paperwork, including the computerisation of records.
- Quarterly Community Newsletters.
- Various training courses based on locally identified needs.
- Short term loan of ICT equipment (*try before you buy*).
- Advocacy and liaison work with local Landlords, Defra & other agencies.
- Lamb Bank, Sales & Wants and Labour/Skills List development work.
- Organisation and delivery of social & community events.
- Topical presentations & awareness raising events (including educational visits).
- Seeking feedback on consultations at local, regional & national levels.
- General drop in and telephone advice on a range of issues and signposting to other helper organisations & agencies.
- Provision of venue & outreach facilities for a range of agencies & organisations including Citizens Advice Bureau.
- Provision of facilities for Pilate's sessions, chiropody and community meetings.
- Facilities for advertising local businesses/services.
- Internet access, photocopying & faxing facilities.
- Support with the organisation and provision of annual local agricultural shows and monthly producers markets.
- Teesdale Heritage Group and Wear & Tees Farmwatch operated under the umbrella of UTASS.
- Administration and collection point for the N E First Credit Union.



**Out of Office Help:** Thanks to our precious Volunteers we were able to continue offering year round, **24/7** out of office support for those with urgent needs. This amounted to **7288** hours in 2013 and when costed at the minimum wage of £6.31 per hour equates to a gift in kind contribution of **£45,987.28**. Other voluntary time given by UTASS Trustees and helpers amounted to **£48,906.00** making a fantastic grand total of **£94,893.28**.

**Single Farm Payment Work:** March, April and early May were extremely busy due to the advice and support offered to Farmers with the preparation and submission of the Single Payment Scheme (SPS) paperwork in time for the Rural Payments Agency (RPA) mid May deadline. Farmers coming into UTASS early were much appreciated by the UTASS Staff who have their own lambing to manage. **64% of assisted applications were submitted online.**

**Graziers Groups:** We have continued to support and develop 6 Graziers Groups.

**UTASS Membership:** We are in the process of reviewing our membership (asking current registered members if they wanted to remain so) and at the end of 2013 our mailing list stood at **358 addresses (254 farms and 91 other households/agencies/organisations) totalling 1074 members.** \*Membership forms have continued to arrive at UTASS since 31.12.13.

**Contact Monitoring Data: 23,831 contacts (3,535 more than last year) resulting in 31,470 presenting issues.**

The most popular support areas were: Administration support, including assistance with form filling, faxing, emails, photocopying etc. **(11,890 instances)**, Provision of advice and information **(7,465 instances)**

*Service users told us the main stressor causing them distress was:*

Keeping up to date with legislation & complex paperwork/IT requirements



## Activities, Achievements and Outputs Included: Providing Varying degrees of direct assistance to:



## Economic Benefits Gained:

Outcomes arising from most of the work undertaken by UTASS are unquantifiable as, for example, we cannot accurately measure how many people would miss deadlines had they not received information/support from UTASS.

## Quantifiable Economic Benefits Gained Included:

- Based on an average Single Farm Payment of £13,680.00 , assisting **185** farm businesses equates to approximately **£2,530,800.00**
- Direct assistance with SPS forms given to **185** farm businesses. Assume an average Single Farm Payment of £13,680. Assume 20% 'minor' mistakes with 10% penalties equates to **£50,616.00**. For those farmer members who have agri-environmental agreements - cross compliance penalties would also apply.
- Support given to 62 members with Environmental Stewardship Schemes (ELS, UELS & HLS) including applications equates to a minimum **£4,150,000.00** over the 10 year duration of HLS with UELS.
- 17% automatic penalties for failure to maintain a Soil Protection Review (Cross Compliance) would equate to a minimum of **£118,606.00** if applied to 20% of our membership.
- Assistance to members with electronic applications for cattle passports, when assuming 5% of our membership would miss a deadline without our intervention, which would require them to pay for the dam and the calf to be DNA tested – this would amount to a minimum of **£2,152.00**.
- Based on 50% of UTASS farming members being Farm Assured, each farm selling 200 new lambs, 50 old season lambs and 20 beef animals equates to a minimum of **£212,598.00**
- The 6 Graziers Groups we support will receive **£3,780,750.00** amongst them between 2011 - 2021.

## Those who worked in partnership with us included:

- National Farmers Union (NFU)
- Natural England
- Animal Health and Veterinary Laboratory Agency (AHVLA)
- North Pennines AONB Partnership
- Castle Vets
- Farm Community Network (FCN)
- Royal Agricultural Benevolent Institute (RABI)
- Middleton - in - Teesdale Mart (Development Project)
- Teesdale Marketing (Love Food Project)
- Raby Estates
- South West Durham Enterprise Agency
- Environment Agency
- Rural Payments Agency (RPA)
- Strathmore Estates
- Eblex
- Bishop Auckland College
- The Woodland Trust
- Tees Rivers Trust
- Northumberland and Durham County Councils
- Strutt & Parker
- Teesdale School

## Briefings:

A key part of our service is our briefings to members, which aim to give as simply and concisely as possible the essential information distilled from the reams of publications and books emanating from DEFRA. Failure to comply can be costly as support payments can then be subject to penalties. Our goal is to help our members to get all the support payments that they are entitled to. **10** briefings were produced covering a wide range of topics including Cross Compliance, Annual Soil Protection Reviews, Environmental Stewardship, Farm Assurance, Cap Reform and Single Payment Scheme (SPS) issues.



## Training undertaken by UTASS Staff included:

### Training

Business Mentoring Skills  
Suicide Awareness  
Cap Reform  
New Environmental Land Management Scheme (NELMS)  
Dying Well  
Stamp Out Scab (advisors training)  
Defibrillator training  
Emergency First Aid  
Cross Compliance  
Farming Community Network training days

### Staff Members

Richard Betton  
Richard Betton  
Richard Betton and Tessa Wigham  
Richard Betton  
Richard Betton  
Richard Betton  
Julia Stephenson, Anne Scott, Jen Smurthwaite, Emma Spry, Gordon Jones and Diane Spark  
Anne Scott and Julia Stephenson  
Tessa Wigham  
Tessa Wigham and Richard Betton

**UTASS provided a work placement for a student from Samuel King's School in Alston.**

**Training:** A wide and varied range of training took place in 2013 -

**Please see APPENDIX 2 on page 26**



Emma Johnson & Campbell Seedhouse (Left) and Peter Medd & Oliver Bennison (Below) took part in aged 13-16 Tractor Driving Training.





## **Community Newsletters:**

4 were produced and distributed to members and other interested agencies and organisations. The Newsletters contained information on social, community, leisure & educational/training opportunities as well as details of items for sale or required by members.

## **Consultation and Input at Local, National & International Levels Included:**

- Defra's ongoing meetings re: Soil Protection Review
- Meeting with Paul Christensen Chair of Natural England
- Sustaining Commons conference at Newcastle University
- Liaison with Durham Constabulary on rural crime
- Follow up with Ministers, local MP's and MEP on impact of CAP reform on hill farming
- Follow up meetings regarding Natural England evidence review
- Regular attendance at NE 'Land Agents' briefing
- NFU Council, Regional Board and Upland Group
- FCN conference
- Liaison with RPA Stress Team
- Attendance at FCN Branch meetings and national management team
- Attendance at IAgSA meetings
- Tenants conference
- Heart of Teesdale "focus on farming".
- AONB partnership and North Pennine Chain Local Nature Partnership
- Member of RPA and Natural England Independent Appeals Panels
- Meeting with Owen Patterson (DEFRA)
- RPA/DEFRA Customer Insight Testing of Online Application Process
- Testing of the new RPA Online RLR Viewer for mapping services and land parcel amendments

## **Support for other Agencies & Organisations Included:**

Help with photocopying for Middleton - in - Teesdale Churches, Swaledale Sheep Breeders Association (SSBA), Eggleston Parish Council and Eggleston Village Committee. Middleton Chrysanthemum Show borrowed tables and Middleton Plus held Producers Markets in UTASS during the winter months and on market days when the weather was too poor to sell outdoors.

## **Agricultural Shows:**

We provided assistance to Middleton - in - Teesdale Spring Show (High Force Show) and Langdon Beck Show Committee including preparing and printing the schedules and catalogues. Richard Betton was the Licence Holder and Bio-Security Officer for both the High Force and Langdon Beck Shows.

## **ICT Support:**

The use of the community computer in UTASS increased again this year – mainly due to job search activities and tourists. Our bank of short term loan ICT equipment diminished as the age of the equipment began to take its toll. Our PowerPoint projector and screen were also loaned out on numerous occasions for wider community benefit.

## **Computerised Farm Records and Agricultural Secretarial Work:**

With the changes in reporting of cattle movements to either online or by telephone there was an increase in members requesting assistance in varying degrees: either in the form of guiding them through the British Cattle Movement Service (BCMS) website to enable them to report movements and notify births etc. online themselves on a home computer or undertaking those electronic reports to the Cattle Tracing System on behalf of the member. Two additional members requested their farm records be maintained by UTASS using the Farm Matters Software. Many applications for permits, waste exemptions and Single Farm Payment are now made online and there was a significant increase in the number of members requesting assistance in this area – particularly as it is anticipated all applications for support payments will become digital by default in 2015.

## Lamb Bank, Sales & Wants & Labour/Skills Lists:

Lamb Bank, Skills & Services and Sales & Wants schemes continued to be very well used.

## Presentations & Awareness Raising Events/Activities Included:

- “The work of UTASS” and a farm visit for County Durham Community Foundation and Farm Cornwall
- “UTASS Past, Present and Future” HRH The Prince of Wales and The Prince’s Countryside Fund at Clarence House
- UTASS work with the Love Food project” – Eggleston Hall
- “What is UTASS” Barnard Castle Methodist Church Harvest Festival
- "The Impact of Enforcing Regulations” to North Yorkshire County Council Trading Standards
- “Fluke” – evening session at UTASS
- “Stamp out Scab” – evening session at UTASS

## Reviewing and Planning:

UTASS Trustees and staff attended a joint reviewing and planning day in August. Independent Facilitator Michele Armstrong presided over the session and an action plan was formulated.

## UTASS Mini bus:

Was very well used by a range of community groups and provided a regular Thursday evening service bringing in young people to UTASS from the most isolated parts of the upper dale.



The UTASS Mini Bus being used for a farm visit in Teesdale



## Comments and thanks received from users of UTASS in 2013 included:

*"Fantastic - doing a great job  
- Thank You"*

*"I don't know what we would do without UTASS. I'm now managing to do my VAT online.  
- thanks"*

*"Any problems, just a phone call is needed."*

*"Very helpful and approachable. They deal with grass roots issues that are very relevant to farmers."*

**"There is always someone to talk to who understands your problems."**

*"Helpful & friendly staff always willing to help with any problems"*

*"UTASS is always helpful whether on the phone, via the internet or in person."*

**"Nice & friendly helpful service, always make a point of returning a phone call."**

*"It's Local and easy to access."*

*"Willingness to listen, & understand & address our problems, & contact organisations on our behalf."*

*"Can get to speak to someone virtually immediately."*

*"Activities for young people helps with isolation and confidence issues. Just someone being there for them."*

*"UTASS help with farming matters in a friendly, helpful, confidential way."*



# Work with Children & Young People:

## Young Peoples' Facilities:

Sessions provided much needed social facilities on weekday evenings, some weekends and during school holidays. Many of those living on remote farms were transported to and from activities in the **UTASS mini bus**.

The Young People continued to play their part in the management, development and financing of their project and we achieved **Investing in Children** for the **8<sup>th</sup>** year running.

A total of **172 Young People (79 female and 93 male)** accessed Drop In and Youth Club at UTASS. This is a **3% increase** on last year.

Sessions were delivered weekly throughout the year on Monday and Thursday evenings. From May onwards healthy cooking sessions were delivered on Wednesday evenings. Thursday nights were the most popular with an average attendance of **65 Young People**. An average of **20 Young People** aged 8-14 years attended the Monday Night Girls Group. Wednesday evening cookery sessions had an average attendance of **16**.

Jacob Rayner and Joe Hall at the Wednesday night healthy cooking session.



Throughout the year some of our work with Children and Young People was funded through the **BBC Children in Need**. This complemented the work funded by **Durham County Council**, **individual private donors** and our **truly fantastic team of Volunteers**.



## Activities and facilities provided at Young Peoples' sessions included:

- Film & TV nights
- Arcade dance mats and car racing machines
- Arts & Crafts
- Specialist information nights (See photograph below showing Young People learning about resuscitation)
- Healthy eating nights
- Games nights including darts, table tennis, carpet bowls & pool competitions
- CV preparation sessions and job application support
- Discussion nights (racism, sexism, disability, sexuality, homophobia, domestic violence, contraception, pregnancy, attitudes, values and decision making, illness, death & bereavement, bullying, relationships, health & safety, citizenship, drugs, alcohol, eating disorders, smoking, self harm, depression & mental health, lifestyle issues, exercise & healthy eating, housing issues, careers, money, law & rights, parenting, crime, politics, school issues, transport, religion, compromise & negotiation skills and volunteering)
- C-Card condom distribution scheme and Chlamydia screening
- X Box, wii, play station and internet café



Sue Bainbridge from Middleton-in-Teesdale Fitness Suite joined us on our young peoples 'Specialist Information Night'.

## **School holiday and offsite activities included:**

- Mixed crafts
- Bowling, Ice Skating and Lazer Tag
- Activities at the Hub
- Riot training with the police
- Visit to Lightwater Valley
- Sailing at Grassholme Reservoir
- Metro Centre visit

## **Specialist Workers and Advisors from agencies and organisations provided information and advice for our Young People included:**

- Teresa Hutchinson (School Nurse Practitioner)
- Police
- 4Real (Drug & Alcohol Advisory Service)
- Kaye Bramhald (Sexual Health Outreach Worker with the Primary Care Trust)
- Billiejean Summerbell (DISC LGBT Health and Wellbeing Worker)
- YMCA
- Middleton Gym

## **Young People and parents/carers helped raise the necessary funds to operate their youth “Drop In” facilities. Events & activities organised included:**

Table top sales, tombolas, raffles, sponsored walk and a disco.

## **Various Young People participated in community events & activities which included:**

- UTASS activities survey
- Helping at The Prince’s Countryside Fund National Countryside Awareness Events
- Putting together food hampers for the Cameron Relief in Sickness Charity
- Taking part in a Prince’s Countryside Fund event at Clarence House



The Monday Night Girls Group with the food hampers they prepared for the Cameron Relief in Sickness Fund





### **Youth Work Staff & Volunteers training included:**

<b>Training</b>	<b>Staff member/s</b>
Outdoor First Aid	Theo Clapp
Customer Service (Level 2)	Theo Clapp
Defibrillator Training	10 young people, Jen Smurthwaite & Gina Richardson

Child Protection (Child Abuse & Neglect) Gina Richardson

### **Educational Visits:**

Continued with a further 9 schools, Brownies group and European Environmental Youth Workers exchange party- leading to **294** Young People benefiting. Julia Stephenson and Jennie Stafford provided sessions about the farming year and how it affects all that we see around us.

**Dates of sessions and groups participating are given in Appendix 2 on page 27**

Most of the educational visits were funded by the Ernest Cook Trust. Help for the visits also came from Harrison & Hetherington staff, farmers who brought in livestock and a volunteer who helped with craft activities



## A selection of some of the comments made about the Drop In and Youth Club in 2013:

*"Coming to the group has helped me by being able to talk about the problems I have at home"*

*"I have found new friends which has made me more confident in participating in activities that I wouldn't have before."*

*"You lot deserve a medal as big as a frying pan and earplugs to go with it"*

*"We don't have any broadband or mobile phone signal where we live so I feel quite isolated and lonely when I am at home on the farm. Coming to UTASS means I can have fun with my friends".*

*"UTASS is fun and I like doing the activities"*

*"I meet new friends and I feel happier in myself by attending the drop in"*

*"I like coming to the drop in and I can talk to the adults about issues"*

*"UTASS is fun and it makes me happy"*

*"I was scared to come because I didn't know many young people, but once I got there I enjoyed myself"*

# Outreach Facilities and Services:

**Citizens Advice Bureau:** The service changed this year and was delivered fortnightly rather than weekly. Sessions were from 9.00 am to 1.00pm every other Monday.

Although the number of sessions has reduced the number of clients accessing the service is going up and in 2013 we saw a rise in client contacts from **47** to **58**.

However, the service is still not running at maximum capacity and we look forward to more people using the service in 2014. Appointments are not needed and anyone can just drop in for advice.

The main enquiry area continued to be Welfare Benefits but there were also a range of other enquiries including debt, housing and employment.

The general feedback was that people appreciate being able to access the service locally without having to make the journey to our main office in Barnard Castle.

**2D:** Used UTASS for Information, Advice and Guidance meetings with clients.

**Durham County Council:** Community Support Staff held monthly drop in advice surgeries.

**George F White:** Farmer advice clinics.

**Teesdale Physiotherapy:** Pilates sessions on Wednesdays (am).

**Middleton Plus Development Trust:** Monthly indoor Farmers Markets during winter months and when weather was poor.

**Chiropodist Services:** A visiting Chiropodist provided services for private patients on a 6 weekly basis.

**UTASS premises/facilities were also used for meetings/events by various groups including:**

- Durham County Council (public consultation events)
- Teesdale Heritage Group (social events, storage of artefacts and archiving)
- Farmwatch (meetings)
- Middleton Christmas Lights Group (storage of Christmas lights)
- The Cameron Relief in Sickness Fund (meetings and administration)

## **Funders, Assisters & Advisers:**

Please see **APPENDIX 3 page 28**. It should be noted that the freely given donations we received from Patrons, Trustees, Staff, Members and Volunteers formed an invaluable and essential part of our funding package. Many thanks to everyone who supported our work.

**Your contributions were/are truly appreciated.**

## **Volunteer Contributions:**

A fantastic amount of hours equating to **£94,893.28** was **given by our many valued Volunteers**. This tremendous goodwill once again significantly eased the workload.

## **UTASS Bankers:**

**Barclays**, Darlington and the Dales, 31 High Row, Darlington.

**Yorkshire Building Society**, C/O Addison & Co, Ebor House, 91 Galgate, Barnard Castle, Co Durham, DL12 8ES (until May 2013)

**Scottish Widows**, 67 Morrison Street, Edinburgh (until 4<sup>th</sup> June 2013)

**Virgin Money**, Jubilee House, Gosforth, Newcastle, NE3 4PL (from 2<sup>nd</sup> July 2013)

## **UTASS Accountants:**

Addison & Co, Ebor House, 91 Galgate, Barnard Castle, Co Durham, DL12 8ES

## **UTASS Advisers:**

**2D**, Unit 9, Crook Business Centre, New Road, Crook, Co Durham, DL15 8QX

**Durham Rural Community Council (DRCC)**, Park House, Station Road, Lanchester, Co Durham, DH7 0EX



**UPPER TEESDALE AGRICULTURAL SUPPORT SERVICES LTD  
(UTASS) REGISTERED OFFICE:**

9-11 Chapel Row  
Middleton - in - Teesdale  
Barnard Castle  
County Durham  
DL12 0SN

**Registered Charity number: 1120120**

**Company Limited by Guarantee number: 06054331**

**Telephone:** 01833 641010

**Fax:** 01833 640872

**Email:** [info@utass.org](mailto:info@utass.org)

**Website:** [www.utass.org](http://www.utass.org)

**Facebook:** Utass Upper Teesdale


**Twitter:** @UtassUpperTees

**UTASS Objects/Mission Statement:**

“To promote the benefit of the inhabitants of the community of the rural area of Upper Teesdale and the neighbourhood thereof through the provision of facilities in the interest of the social welfare for the recreation and other leisure time occupation with the objects of improving the conditions of life for the said inhabitants”.

**UTASS Aim:**

“Working with our community to help prevent problems from getting to the desperate stage”

Signed by.....

Date.....13/3/14.....

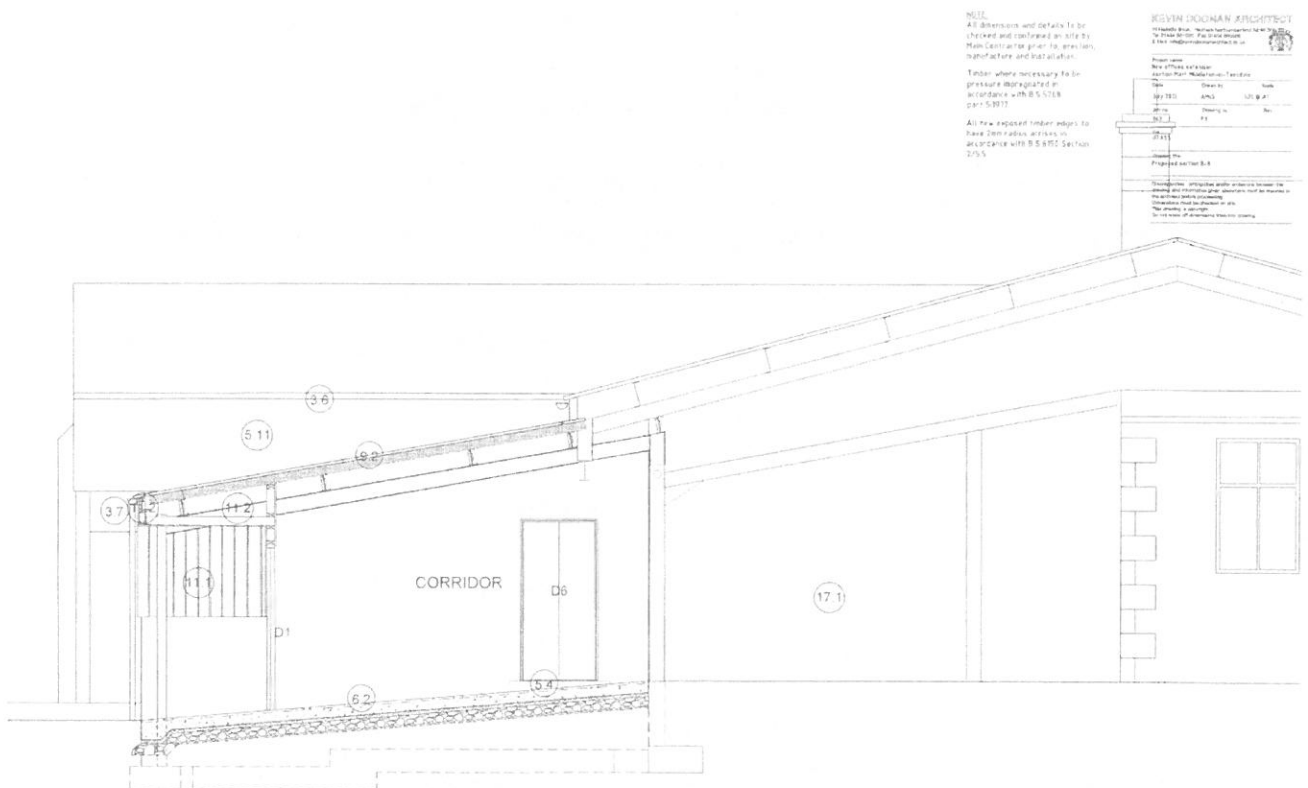
**Dr Jonathan Nainby-Luxmoore**

**UTASS Chairperson**

# APPENDIX 1

## PLANS FOR NEW BUSINESS UNITS

### AT MIDDLETON-IN-TEESDALE FARMERS AUCTION MART



SECTION B-B





# APPENDIX 2

## 2013 TRAINING COURSES

	TRAINING SESSION OFFERED	
DATE	COURSE TITLE	NUMBERS ATTENDING
4.2.13 - 18.3.13	VAT Training	6
7.3.13	Emergency First Aid at Work	11
21.5.13	Food Hygiene Course	13
28.5.13	Defibrillator Training	8
29.5.13	Fluke in Cattle & Sheep with Castle Vets	37
31.5.13	Cash Flow training	7
12.6.13	Quad Bike Training	2
18.6.13	Stamp Out Scab	9
21.6.13	Cash Flow training with Accounts	7
29 & 30.6.13	BWMB Shearing course (2 days training)	11
26.7.13	Cash Flow training & Budgeting	6
10.8.13	13-16 Tractor Driving Training	2
13.8.13	PA 1 Spraying (Theory) Training	9
13.8.13	Defibrillator Training	20
15.8.13	PA2 Boom Sprayer Training	6
16.8.13	PA6 Hand Held Applicator training	6
19.8.13	Eblex Rush Management Event (Harwood)	50+
29.8.13	PA 1 Spraying (Theory) Training	9
9.9.13	PA 1 Spraying (Theory) Training	7
10.9.13	PA2 Boom Sprayer Training	6
4.10.13	Durham Hedgerow Partnership Hedging Course	1
5.10.13	Durham Hedgerow Partnership Hedging Course	1
15.10.13	RPA Inspections & Cross Compliance	55
22.10.13	Defibrillator Training	20
25,26 & 28.10.13	13-16 Tractor Driving Training	6
9+20.11.13	13-16 Tractor Driving Training	4
14.11.13	PA 1 Spraying (Theory) Training	9
15.11.13	PA2 Boom Sprayer Training	6
18.11.13	PA6 Hand Held Applicator training	5
19.11.13	Defibrillator Training @ Langdon Beck	8
19.11.13	Digital by Default	7
20.11.13	Digital by Default	2
10.12.13	Pre-Tractor Test Training	10
		261

## MONITOR FARM TRAINING

	TRAINING SESSION OFFERED	
DATE	COURSE TITLE	NUMBERS ATTENDING
18.2.13	Restoring Fields after a wet year	18
19.2.13	Improving Farm Systems in LFAs	19
5.3.13	Profitable Sheep Production	16
13.3.13	Beef Feeding Systems & Selection	32
3.6.13	Cattle Carcases - CT & Cross Lanes Organic	35
11.6.13	Beef & Sheep Costings & Topical Diseases	28
17.6.13	Monitor Farm Celebration	67
		215

## EDUCATIONAL VISITS ( ½ day)

	TRAINING SESSION OFFERED	
DATE	COURSE TITLE	NUMBERS ATTENDING
16.1.13	Middleston Moor, Spennymoor	31
16.1.13	Middleton-in-Teesdale Brownies	13
30.1.13	Tanfield Lea Primary	23
15.3.13	St Wilfred's Bishop Auckland	23
27.3.13	Delves Lane School, Consett	25
1.5.13	St Cuthbert's School, Seaham	24
23.5.13	Visit to Ingleton Primary School	25
13.6.13	Ingleton School	40
2.7.13	Gainford School	24
11.7.13	Staindrop School	50
1.10.13	Farm Visit by Youth Workers from E.U.	16
		294

## APPENDIX 3

### FINANCIAL INFORMATION

		Unrestricted Funds	Restricted Funds	Total Funds 2013	Total Funds 2012
	Note	£	£	£	£
<b>Incoming Resources</b>					
Incoming resources from generating funds:					
Voluntary income	2	29,663	131,832	161,495	161,417
Investment income	3	650	–	650	670
Incoming resources from charitable activities	4	21,815	123,119	144,934	54,474
		_____	_____	_____	_____
<b>Total Incoming Resources</b>		<b>52,128</b>	<b>254,951</b>	<b>307,079</b>	<b>216,561</b>
		_____	_____	_____	_____
<b>Resources Expended</b>					
Charitable activities	5	(68,239)	(203,130)	(271,369)	(234,625)
Governance costs	6	(1,320)	–	(1,320)	(3,906)
		_____	_____	_____	_____
<b>Total Resources Expended</b>		<b>(69,559)</b>	<b>(203,130)</b>	<b>(272,689)</b>	<b>(238,531)</b>
		_____	_____	_____	_____
<b>Net Incoming/(Outgoing) Resources Before Transfers</b>	7	<b>(17,431)</b>	<b>51,821</b>	<b>34,390</b>	<b>(21,970)</b>
Transfer between funds	8	35,980	(35,980)	–	–
		_____	_____	_____	_____
<b>Net Income/(Expenditure) for the Year</b>		<b>18,549</b>	<b>15,841</b>	<b>34,390</b>	<b>(21,970)</b>
		_____	_____	_____	_____
<b>Reconciliation of Funds</b>					
Total funds brought forward		111,224	32,681	143,905	165,875
		_____	_____	_____	_____
<b>Total Funds Carried Forward</b>		<b>129,773</b>	<b>48,522</b>	<b>178,295</b>	<b>143,905</b>
		=====	=====	=====	=====

The Statement of Financial Activities includes all gains and losses in the year and therefore a statement of total recognised gains and losses has not been prepared.

All of the above amounts relate to continuing activities.

**THE FULL ACCOUNTS ARE AVAILABLE ON REQUEST**